



Gardens that inspire

WARBLER

ANNUAL REPORT 2020-2021

Wing Haven Foundation Board of Directors 2021-2022

President
Charlie Morris

First Vice President
Lydia Skardon

Treasurer
Deborah Schmitz

Secretary
Kimberly Wilson

Auxiliary Council President
Mary Stokes

Past President
Susan D. Barrett

Michelle Cicoletti
Lawrence Gordon
Beth Hagan
Henry James, Jr.*
Shirley Kosmicki
Nancy Lowry
Robert Shore
William Smith
Kelly Thomas
Ellen Wade

* LIFETIME BOARD MEMBER

A DIFFERENT GARDEN EXPERIMENT

Wing Haven and Preserve Mecklenburg, Inc. are proud to announce the successful completion of a joint venture to protect and preserve the integrity of the Elizabeth Lawrence House & Garden (ELH&G), located at 348 Ridgewood Avenue. This collective endeavor provides a new model of innovation and collaboration between two entirely different non-profits and is an inspiring story of creating best-case outcomes. Wing Haven is honored to have been a part of this innovative story that created a win for all involved.

Wing Haven Foundation purchased the Elizabeth Lawrence House & Garden in 2008 to preserve and promote the legacy of internationally celebrated garden writer Elizabeth Lawrence, as well as fulfill one of the tenets of the Wing Haven mission—to celebrate the legacy of Southern horticulture. The garden is on the National Register of Historic Places and is protected by a conservation easement, which is held by the Garden Conservancy.

The property directly adjacent to and uphill from ELH&G, 342 Ridgewood Avenue, was owned by Elizabeth Lawrence's sister Ann. Both sisters built their homes in the late 1940s. While there is no

historical significance to Ann's property, there is evidence that the two properties shared certain garden elements, and Lawrence documented some of the existent plantings in her writings. Late last year, Ann's children, Elizabeth Rogers and Warren Way, decided to sell their mother's property. Elizabeth and Warren, who were devoted to their Aunt and cherish her legacy, turned to Wing Haven for assistance to preserve and protect the ELH&G. They knew, as did the Wing Haven Foundation, that any significant changes to their property - air flow, light exposure, hydrology - could result in dire consequences to the garden of Elizabeth Lawrence.

To reduce and manage the short- and long-term risk to the garden while respecting the needs of Ann's family, Wing Haven partnered with Preserve Mecklenburg, Inc ("Preserve Meck").

Preserve Meck, under the leadership of Board Chairman Tommy Lee, is a relatively new, privately funded, 501(c)3, real estate preservation group that works to save sites of historical and cultural significance in Mecklenburg County and neighboring counties.

CONTINUED INSIDE



Sister properties on Ridgewood Avenue: the former Way property at 342 (right) and the Elizabeth Lawrence House & Garden at 348 (left)

FROM THE DIRECTOR

Celebrating the Legacy

As we look to the past and navigate through unusual times, we are reminded of the things we appreciate and value. This includes the vital role gardens and nature contribute to our lives. As we reflect as a staff, we find ourselves grateful for the legacies of the Clarksons and Elizabeth Lawrence. We are thrilled to be able to continue sharing their legacy in impactful ways with the community, region and nationally.

Fiscal year 2021 was a year of many challenges but even more positives. We learned so much about how we can better serve our community with enhanced programming and resources. We used virtual platforms to include new friends in places across the globe. Our gardens were a place of joy and restoration for many and a retreat for healthcare professionals.

We received increased support from our donors as well as countless generous donations listed in this report. We are on firm financial footing and have created new and innovative programs.

These gifts support our work and the resources we offer the community. As you enjoy the articles from staff you will see the many opportunities your contributions afford us to enhance our mission and find meaningful collaborations that help continue the legacy.

Thanks to everyone's support the future of Wing Haven is secure and we have much to celebrate.

With much appreciation,



Barrett Sloan Ranson
Executive Director

MEET OUR NEWEST TEAM MEMBERS

We are pleased to welcome four new staff members to the Wing Haven team!



Tracey Roode started in her role as Education Coordinator in April.

Since June, our new Volunteer Coordinator is **Andrea Funk**.



Our new **Admissions Team** greets visitors during open hours: **Janet Porto** (left) and **Amy Poole** (right).



A DIFFERENT GARDEN EXPERIMENT, *continued from cover*

Preserve Meck was intrigued by the challenge and opportunity to help preserve the garden, the story and the overall streetscape of Ridgewood Avenue, yet enable the neighborhood to continue to modernize and grow from both an architectural and economic perspective.

As Dan Morrill, Preserve Meck's Administrative Consultant and former Director of the Charlotte Historic Landmarks Commission explains, "The Elizabeth Lawrence House & Garden is a living representation of the life, work, and passion of Elizabeth Lawrence, and the property's ability to flourish well into the future is a testament to the flexibility inherent in Preserve Meck's mission. Ensuring Elizabeth Lawrence's legacy can live on undisturbed is an incredible example of the power of creativity and vision of two privately-funded nonprofits [the Wing Haven Foundation and Preserve Meck] working in collaboration with one another."

Preserve Meck brought architects, landscape architects, conservation and real estate experts to the conversation. Wing Haven brought historic and garden expertise, primarily through the guidance of ELH&G Advisory Committee member Frances Alexander and ELH&G's Garden Curator Andrea Sprott, as well as significant legal help through the donations of Chris Oates. Together, the two organizations developed a preservation and marketing strategy that would not only protect the significant plants and trees of Elizabeth

Lawrence's garden, but would also ensure the sale of the property and development of a community sensitive home through collaboration and creativity.

Now with its own historic covenants and easements, 342 Ridgewood Avenue was recently purchased. The new owners, Jay and Betsey Rebello, have embraced the easement and garden history associated with their home site. "As we plan our new house, we are excited to create a home that will blend into the traditional Myers Park style while complementing the beauty of the garden next door," said Betsey Rebello. "Our focus will be on outdoor living and designing a Southern garden. We hope all of the Ridgewood families will work together to make sure the elements that make our neighborhood special are preserved."

Thanks to a willingness to think about real estate and preservation differently among board members, community volunteers and leaders, the generosity and patience of Elizabeth Lawrence's family, as well as numerous donations of professional, legal and consulting services, the ELH&G will remain protected as a historical treasure for future generations of visitors and scholars. Charlotte, NC has pioneered a new national model of collaboration between real estate and preservation interests, and this beautiful story of experiment is now available for inspiration, education and enjoyment.

FINDING INSPIRATION IN THE CLARKSONS' FRONT GARDEN

Reavis Thornton, Head Gardener, Wing Haven Garden & Bird Sanctuary

Wing Haven has been very busy this year. It seems like everyone wants to be outside and they want to garden. There couldn't be a better place in Charlotte than Wing Haven to come for inspiration.

I find inspiration all over Wing Haven Garden & Bird Sanctuary, but especially in the Front Garden. Starting at the sidewalk, there are fragrant herbs and roses that Elizabeth Clarkson placed at the entrance. The large pink blooms of the Pink Radiance roses invite you to literally stop and smell the roses, while the small pink blooms of the Fairy Rose in the raised beds beg you to bend over to take a closer look and smell their lovely scent. By now you have probably brushed one of the many fragrant herbs here, and are trying to decide which one you smell. It could be one of the artemisias—Southernwood (*Artemisia abrotanum*) with pale green-gray ferny foliage, or Powis Castle with silver-gray lacy foliage, or it could be the Lavender Cotton (*Santolina incana*) with its dainty yellow pom pom flowers.

There is bronze fennel (*Foeniculum vulgare* var. *atropurpurea*) with large umbels of yellow flowers on top of six foot tall stems, a great host plant for many butterflies and pollinators. Look closely at the bronze foliage and you might see the caterpillars of the Eastern Black Swallowtail feeding on the licorice-scented leaves.

There are many different creeping thymes gently hanging over the wall and a silver or variegated leaf sage—their scent reminds me of Thanksgiving dinner. You may see the blue blooms of rosemary (*Salvia rosmarinus*, formerly *Rosmarinus officinalis*) or purple blooms of lavender (*Lavandula* sp.). Touching the soft fuzzy leaves of the lamb's ear (*Stachys byzantina*) tells you why it was often planted next to the old-fashioned outhouse.



The front courtyard garden is separated and partly hidden from the street by the raised beds planted with boxwood. This intimate space is less busy with fewer varieties of plants. This is a great place to sit and watch the birds. Sit on the front steps of the Clarkson's house, or on the terra cotta flue seats, and enjoy the winter sun. Here a wintersweet (*Chimonanthus praecox*) and a Japanese flowering apricot (*Prunus mume* 'Peggy Clarke') bloom in the winter and fill this courtyard with wonderful sweet fragrance. Mrs. Clarkson also grew winter iris (*Iris unguicularis*) here. Pansies bloom on each side of the front steps and Coral Bell azaleas bloom in spring. Summertime blooms are colorful annuals, and by August the white rain lilies (*Zephyranthes candida*) from her mother's garden are starting to bloom.

This is just the beginning. There is much, much more to see behind the iron gate and brick walls that surround Wing Haven Garden & Bird Sanctuary. Come see what inspires you.

TOP RIGHT Elizabeth Clarkson's original pink evening primrose (*Oenothera perennis*) brightens the narrow beds at the sidewalk. Photo © Betty Thomas

BOTTOM LEFT A lovely combination for the senses: variegated mint (*Mentha spicata* 'Variegata') and lambs ears (*Stachys byzantina*) grow beautifully together in the raised bed.

BOTTOM RIGHT The Front Garden of the historic Clarkson House.



GROWING THE LEGACY—VIRTUALLY AND LITERALLY

Andrea Sprott, Garden Curator, Elizabeth Lawrence House & Garden

I know I am not alone when I say I do not like change. In the garden, change is expected—in many ways; plants of all sizes and shapes come and go with the weeks, months, seasons and years. I find great delight in that kind of change—that's part of the magic of gardening. That, however, is not the kind of change I'm talking about. When we suspended in-person "Imbibe & Inspire" (I&I) programming at the Elizabeth Lawrence House & Garden last year, I was asked if I would do the program virtually. I must admit: I balked.

What you need to know going into this is that I am a big fan of processes. Anyone in my line of work needs processes in place to be effective. Up to spring 2020, I had my system for in-person I&I relatively nailed down. Each third Thursday, things went fairly smoothly; participants seemed to enjoy it, as did I. Well, we all know what happened next. Change, and not the good garden-y kind. Internally, we discussed how programming would/could shift. We needed to continue to connect with the community and beyond, even if we could not do it in-person. I eventually came around to the idea of filming I&I to offer it virtually.

I don't know many people who are comfortable being on the business end of a camera. Let me clarify: I don't know many people my age (nearly 50) who are comfortable being on the business end of a camera. I certainly was not among those who were. Funny what a year-plus of filming once or twice every four weeks does to ease one's discomfort. With each passing monthly virtual installment of I&I, it got easier to talk to the camera without wondering if I looked weird, had something in my teeth, or heaven forbid, said the wrong thing. Once I reminded myself that Elizabeth Lawrence and her

garden are my superpower, most anxiety-ridden self-consciousness went out the window.

The total effort that is virtual Imbibe & Inspire programming is not a solo act by *any* means. Stefanie Myer added videographer, creative director and film editor extraordinaire to her Marketing Coordinator duties. She makes each installment of I&I happen, quite literally. Jill Goodrich, Director of Outreach & Education, is the conduit between the final production and our participants, and, especially early on, added "Andrea's personal cheerleader" to her job hat collection on more than one occasion.

The best thing about offering I&I virtually is that we are reaching a far broader audience than we could ever reach in-person. We have regular participants in Ohio, Maryland and Georgia, as well as North and South Carolina. How cool is that?!

Another way that I am hoping to broaden our audience even farther is through regular posting on the Elizabeth Lawrence House & Garden blog. (Find it at winghavengardens.org/el-blog/ or click on the "BLOG" link at the bottom of our homepage.) New installments are posted twice a month, on all things Elizabeth Lawrence—from old plants to new plants, from her writings and research to my current record-keeping, from her studio to our archive, and lots more! It is fun to share more about Elizabeth and her garden through writing for the blog, and it forces me to reconnect on a more meaningful level with all aspects of my job... and then share that with all of you!

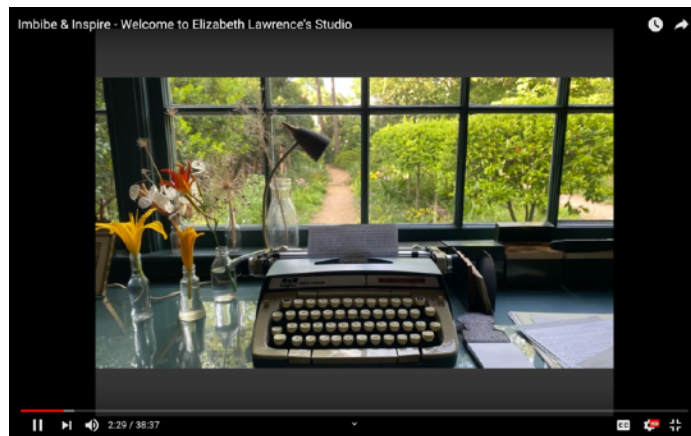
As much as it might pain me to say it, sometimes change is a wonderful thing.



TOP LEFT Last year, Imbibe & Inspire tours were curated walks through Elizabeth Lawrence's garden.

BOTTOM LEFT Andrea shows virtual participants how she uses color charts that Elizabeth used to suss out identities of certain plants, in this instance, daylilies (*Hemerocallis*).

BOTTOM RIGHT This year, Imbibe & Inspire installments focus on different aspects of Elizabeth Lawrence's house, garden and work. August 2021 takes participants on a behind-the-scenes tour of Elizabeth's studio—the place where she did most of her research, writing and design work.



GROWING A COMMUNITY THROUGH A SHARED LOVE OF NATURE

Stefanie Myer, Marketing Coordinator

Over the past three years as Volunteer Coordinator, I have had the privilege to meet and work with volunteers of all ages and from all walks of life. When I first meet a new volunteer, I like to ask what brought them to Wing Haven, and I've heard a myriad of reasons: some are apartment dwellers who are drawn to the gardens as a place to get their hands in the dirt, others are here to educate and share their knowledge with others and many just want to be part of a community that they feel passionate about.

The Clarksons' and Elizabeth Lawrence's shared love of nature built not only the walls of Wing Haven and grew the plants inside each garden, but also built the foundation for a community of nature lovers to grow and develop together. Even before the creation of the Wing Haven Foundation, the Clarksons' welcoming spirit encouraged their friends and neighbors to share their time caring for the Clarksons' personal garden, leading busloads of schoolchildren through garden tours, and later, raising money through plant sales. To this day, volunteers are attracted to this garden as a place to share their time and talents with a community of like-minded peers. Similarly, volunteers are drawn to the Elizabeth Lawrence House & Garden because they are inspired by her purposeful and dedicated work studying plants in the South. They enjoy working with Garden Curator Andrea Sprott as she discovers the history of Lawrence's bulbs, blooms and garden beds.

In several of our lectures during this past winter's Lecture Series, we learned that there is a strong correlation between access to green space and increased levels of physical and mental health and happiness. As Charlotte grows and becomes more urban, we begin to yearn for more green space. Similar to the symbiotic relationship between a bee needing nectar from a flower, and in return the flower being pollinated by the bee, Wing Haven relies heavily on our volunteers as we strive to continue the legacy of these gardens year after year. More and more we see a need for the escape that Wing Haven offers to our volunteers and the community.

I have now transitioned to full-time Marketing Coordinator and am excited to have passed the Volunteer Coordinator baton over to Andrea Funk, who has jumped right into her coordinating duties. It's been a pleasure to get to know each person who volunteers and to see the depth and breadth of each shared experience inside these walls. Wing Haven truly is one of Charlotte's most magical places.

TOP RIGHT *Volunteers have fun and work hard at the Elizabeth Lawrence House & Garden. Kristin Triplett (seated) and Joe Swift help out in the garden most Saturday mornings. ELH&G host Sandra Blanton enjoys a stroll through to see blooms to point out to visitors.*

BOTTOM RIGHT *The Great Backyard Bird Count takes place in the frigid month of February, but that did not deter Kelly Thomas (left), Eileen Effinger and Diane Furr (right) from bundling up and guiding participants to the best bird-watching spots at Wing Haven Garden & Bird Sanctuary.*

BOTTOM LEFT *Members of our Board of Directors got their hands dirty potting up amaryllis bulbs for our greenery sale. Pictured left to right: Shirley Kosmicki, Beth Hagan, Susan Barrett and Kimberly Wilson.*



EDUCATION KEEPS THE PACE

Jill Goodrich, Director of Education & Outreach

Reflecting on the past twelve months, I am awed by the support of our community. Increasing numbers of visitors engaged in visits and tours, hands-on and virtual programming, and traditional weekend events. We adapted some of our educational offerings to provide safer outside programming and participation has only increased. The slight inconveniences were taken in stride and we appreciate your loyal support.

Certain adaptations provide a better experience. Timed admission makes for a more enjoyable experience. The new Wellness Wednesday meets a need for quiet strolls in the morning. And a new virtual platform showcases horticulture, ornithology and wellness to a larger audience.

We added programs to meet demand and serve a wider community. Our longest running educational program, Story Time & More, is now offered twice a day. We added after-school programs for older children to capture their rising interest in caring for and better understanding our natural world. A change to virtual programming with our Lecture Series and with the popular Imbibe & Inspire has reached more people near and far.

A hybrid approach with both in-person and virtual offerings now helps Wing Haven make a greater impact. For instance, our Preschool

Environmental Education Program (PEEPs) – a literacy-based nature series – will continue to be provided at no cost to over 200 PreK students through a monthly recording with supporting material until those classrooms can return in person. With the recording, we can now offer PEEPs to additional schools unable to visit the gardens – for whatever reason.

Wing Haven is an ideal outdoor learning environment and we love to work with other organizations in the community. Our longstanding partner Art-Kiddo has seen an incredible increase in registrations for their Nature & Art Exploration Workshop and Digging Deeper programs this year. Recently, the community voted and Wing Haven's Art-Kiddo's workshops received the 2021 BOB Award for Best Outdoor Education.

Our “new normal” is less about the inconveniences or the changes in safety protocol and more about the increased awareness of the need to experience our natural world. The community has shown its support and we will continue to deliver the programs you need.

“LOVE all that you’ve done to bring such richness into your children’s program over the past few years! It’s outstanding!”

- Educator



Fun with Art-Kiddo at Wing Haven.

INSPIRATION FROM WITHIN

Tracey Roode, Education Coordinator

In my brief time as the Education Coordinator, I have fallen in love with Wing Haven's gardens and community. The SEED Wildlife and Children's Garden provide the perfect place to carry out our mission to “cultivate sanctuary in nature.” As a child growing up in a medium-sized New England city, I often explored nearby ponds, brooks and woods - increasingly hard to find natural spaces in urban settings.

As an adult, I chose to study art. For me art and nature go hand-in-hand. Nature provides us endless inspiration for creating art and art in turn has the power to inspire us to respect and protect nature. This is what I aim to do through Wing Haven's programs for children and families - inspire a sense of wonder, curiosity and ultimately a love of nature in the minds and hearts of our community youth.

This past spring in our Budding Naturalists and Homeschool Explorers programs, we explored the gardens and learned about birds, beneficial bugs, bats and more. We created garden

luminaries decorated with herbs from our raised beds and fallen flower petals from our pollinators' garden, made “bugs” using leaves, sticks and gumballs, and constructed “toad abodes” from planters to provide a safe place for our amphibious garden friends. I have learned so much from our young visitors and have enjoyed watching them explore the gardens, learning and laughing along the way.

I am also thrilled to work with, and learn from, our dedicated and knowledgeable team of volunteers—many of whom are master gardeners and/or naturalists and all of whom are nature lovers.

I feel so fortunate to have discovered this hidden gem and to have been welcomed into the Wing Haven family with open wings. I feel strongly about our mission, motivated by our work and truly inspired by our community.

WING HAVEN SYMPOSIUM

November 3 & 4, 2021



Birds to Words

Celebrating Nature the Wing Haven Way

Presented to the community by Title Sponsor Wells Fargo, Wing Haven announces the 16th biennial symposium featuring presenters and nationally recognized authors **Lyanda Lynn Haupt** and **Marta McDowell**.



Lyanda Lynn Haupt

channels the environmental and ornithological spirit of Elizabeth Clarkson.



Marta McDowell

shares Elizabeth Lawrence's passion for plants, gardens and writing.

The two-day event includes bird walks led by Mecklenburg Audubon Society, expert-led virtual workshops on bulbs, writing, and nature-based education, a virtual lunchtime discussion on bird habitat preservation with Audubon North Carolina Executive Director and National Audubon Society Vice President Andrew Hutson, and a cocktail celebration in the Main Garden of Wing Haven Garden & Bird Sanctuary.

Join us for the Wing Haven Foundation 50th anniversary (1971-2021) special edition symposium highlighting Wing Haven's vision to inspire a passion for the natural world and honoring the legacies of gardeners and writers Elizabeth Clarkson and Elizabeth Lawrence.

For details and registration, visit winghavengardens.org.

MANY THANKS TO OUR SPONSORS

TITLE SPONSOR



PLATINUM SPONSORS



GOLD SPONSORS



Laurie Durden Garden Design



SILVER SPONSORS



BRONZE SPONSORS

Atlantic Landscape Supplies
B.D. Jeffries
C. DeWitt Foard & Co.
Charlotte Lucas Design
Ellen Kelly Realtor/Broker
Helen Adams Realty

Hidell Brooks Gallery
Joyner-Benfield Distinctive
Land & Waterscapes
Lat Purser & Associates
Loftin & Company Printers



Wing Haven is supported, in part, by the Infusion Fund and its generous donors.

Photo of Elizabeth Lawrence courtesy the Charlotte Observer Collection at the Robinson-Spangler Carolina Room

ANNUAL CONTRIBUTIONS Gifts designated for Wing Haven annual operations received between July 1, 2020 - June 30, 2021

Thank you for your kind and generous support!

Please contact the Office at 704.331.0664 x108 with corrections or questions.

Wing Haven Circle \$10,000+

Akers Foundation, Inc.
Arts & Science Council
The Dowd Foundation

Sustainer \$5,000 - \$9,999

Eleanor & James Barnhardt Foundation
Blackhawk Hardware & Garden Center
Garden Conservancy
Mr. & Mrs. Robert O. Harris, Jr.
Mr. & Mrs. R. Michael James
Share Charlotte
Trust Foundation

Founder \$2,500 - \$4,999

Mr. & Mrs. Douglas K. Anderson
Mr. & Mrs. D. Bradford Barrett
Brandon Lawn Real Estate
Mr. & Mrs. Thomas L. Coker
Kathleen O. Cress
Mrs. Nancy G. Elbersson
Mr. & Mrs. J. Travis Hain
Mr. & Mrs. Henry James, Jr.
Peaceful Ponds
Mr. Patricia A. Rodgers
Rountree Plantation
Mr. & Mrs. Vernon E. Stanley, Jr.
Mr. & Mrs. Tim Stokes
Mr. & Mrs. Bruce D. Voelker
Mr. & Mrs. Daniel T. Wall

Benefactor \$1,000 - \$2,499

Mr. & Mrs. James L. Andrews, Jr.
Mrs. Ann L. Armstrong
Atlantic Landscape Supplies, Inc.
Mrs. Ernest H. Barry
Mrs. Katherine M. Belk
Mr. & Mrs. Thomas M. Belk, Jr.
Mr. & Mrs. Raymond K. Boardman
Mr. & Mrs. Frank Bragg, Jr.
Mr. & Mrs. Herbert H. Browne, Jr.
Mrs. Hugh B. Campbell, Jr.
Mr. & Mrs. Chris Cicoletti
Mrs. Marty Claus & Mr. Robert Clyde
Coca-Cola Bottling Co. Consolidated
Mrs. Ann F. Copeland
The Dickson Foundation
Mrs. Roddey Dowd, Sr.
Elizabeth Bruns Inc.
Mrs. Dale F. Halton
Mr. & Mrs. Watts Hamrick III
Mrs. Anne J. Henderson
Mr. & Mrs. Ben Hill, Jr.
Dr. & Mrs. James C. Hunter
Joyner-Benfield Distinctive Land & Waterscapes
Mr. William Kennedy & Mr. P. J. Fanning
Mr. & Mrs. Matthew J. Kosmicki
Loftin & Company Printers
Mr. Mike Lumpkin & Ms. Lee Armstrong
Mr. & Mrs. Hugh L. McColl, Jr.
Mr. Richard I. McHenry & Ms. Cindy Caldwell
Mrs. Hamilton W. McKay, Jr.
Mr. John Mitchener & Mr. Heath Massey
Mr. & Mrs. Burch Mixon
Mr. & Mrs. Charles Morris
Mr. & Mrs. William Newcomb
Mr. & Mrs. Marc D. Oken
Pepsi Bottling Ventures
The PNC Financial Services Group
Mr. & Mrs. Walker L. Poole
Mr. & Mrs. Jerry L. Price
Mr. & Mrs. Lat W. Purser III
Mr. & Mrs. Bruce H. Rinehart
Mr. & Mrs. Russell M. Robinson II
Mr. Bob Rossier & Mr. Eldred Hudson
Mr. & Mrs. Nelson Schwab III
Mr. Robert Shore & Mr. Brian Caldwell
Mr. & Mrs. Christopher Skardon
South State Bank
Mr. & Mrs. Mark Stabingas

Mr. & Mrs. William G. Staton
Ms. Wendy Strickland
John T. & Kathy Gunter Sullivan Fund
Ms. Kelly S. Thomas
Mr. & Mrs. George H. Van Allen
Mrs. Sally S. Van Allen
Mr. & Mrs. Jimmie L. Wade
Mr. & Mrs. Warren W. Way III
Mr. & Mrs. R. Mitchell Wickham

Sponsor \$500 - \$999

Ms. Frances P. Alexander
Mrs. Laura R. Allen
Mr. & Mrs. Robert L. Avinger
Mr. & Mrs. W. Doak Barnhardt
Mr. & Mrs. William M. Barnhardt
Bartlett Tree Experts
Mrs. Deborah E. Blystone
Mr. & Mrs. John D. Bond III
Ms. Judith Bratton
Mr. & Mrs. J. Douglas Buchanan
Mr. & Mrs. Ashley L. Hogwood, Jr.
Mrs. Anna Gallant Carter
Charlotte Women's Club
Mr. & Mrs. Will Coers
Mr. & Mrs. William R. Cooper
Mr. & Mrs. Joseph N. D'Agostino
Mr. & Mrs. Robert E. Dubler
Ellen Kelly Realtor/Helen Adams Realty
Mr. & Mrs. Douglas W. Ey, Jr.
Fountain Landscape
Ms. Mary Weeks Fountain
Mr. & Mrs. James J. Hagan
Mr. & Mrs. James Van Hall
Mr. & Mrs. Richard C. Handford, Jr.
Dr. Reid Harris & Dr. Sherry Morris
Mr. & Mrs. Ashley L. Hogwood, Jr.
Dr. & Mrs. Harold Ragan Howe, Jr.
Mrs. Anne Dowd Kennedy
Mrs. Thomas M. Little
Mr. & Mrs. Luka Lojk
Lowry Insurance
Mr. & Mrs. Alexander W. McAlister
Mr. & Mrs. Mark Mealy
Mrs. Karey Molly-Tom & Mr. Raymond Tom
Mr. & Mrs. Jeff Neikirk
Petit Philippe
Mrs. Anne Philpott
R. B. Pharr & Associates, P.A.
Mr. & Mrs. Martin Lee Robinson
Mr. & Mrs. George W. Rohe
Mr. & Mrs. Trevor Runberg
Ms. Sallie F. Scarborough
Mr. & Mrs. David Schmitz
Mr. & Mrs. Prescott Shibles
Mrs. Dia Steiger
Mrs. Melissa A. Strahley
Mr. & Mrs. Wesley W. Sturges
Super Sod
Mr. & Mrs. Terry Tindel
Mr. & Mrs. Odon Von Werssowetz
Mr. & Mrs. Craig M. Wardlaw
Ms. Paige M. Waugh
Dr. & Mrs. Mack White
Mr. & Mrs. William H. Williamson III
Mr. & Mrs. Alan Wilson

Patron \$250 - \$499

Mr. & Mrs. Michael Abbott
Mr. & Mrs. John William Adams
Mr. & Mrs. Stanford H. Allison
Ms. Carol Ambrose
Mr. & Mrs. John Anton
Mr. & Mrs. Steve Archer
Mr. & Mrs. William Archer III
Mr. & Mrs. Peter Amette
Ms. Alyson Bailey
Mr. & Mrs. Kevin Bass
Mr. & Mrs. John R. Belk
Mr. & Mrs. Paul F. Betzold
Mr. & Mrs. William F. Blue, Jr.

Mrs. Robert W. Bradshaw, Jr.
Mrs. Thomas M. Brantley
Mr. & Mrs. Casey Brock II
Mr. & Mrs. Thomas W. Bunn
Mr. & Mrs. William Kirk Burton
Mr. & Mrs. Brooks Carey
Mr. & Mrs. Colby Cathey
Ms. Kathryn V. Clancy
Rev. Deborah Moore Clark & Mr. C. Mack Clark
Dr. & Mrs. Herbert W. Clegg II
Mr. & Mrs. Douglas Eugene Combs
Mrs. Fairley Bell Cook
Mr. John W. Cullum
Mr. & Mrs. Adam Currie
Mr. Robert Curry
Mrs. Virginia Davis
Mrs. Jean G. Dixon
Mr. & Mrs. Robert T. Dooley III
Mr. & Mrs. Bill Duffy
Mrs. Randi Edmiston
Mrs. Janet Snell Ernst
Mr. & Mrs. Robert Faut
Mr. & Mrs. Henry W. Flint
Dr. Scott S. Geyer & Mr. Pleas Rogers Geyer
Mr. & Mrs. Ron Gordon
Mr. & Mrs. Will Granger
Mr. & Mrs. Robert Hallett
Mr. & Mrs. Robert Hancock
Dr. & Mrs. Edwin R. Harris
Mr. & Mrs. Robert L. Harris
Mr. & Mrs. Donald L. Harrison, Jr.
Mr. & Mrs. Lloyd E. Hartsell, Jr.
Mr. & Mrs. John Herring
Mr. & Mrs. Mark H. Hindal
Mr. & Mrs. William T. Hobbs II
Mr. & Mrs. Charles T. Hodges
Mr. & Mrs. George R. Hodges
Mr. & Mrs. Frank L. Home, Jr.
Mr. & Mrs. Steven A. Hurr
Ms. Mary Keller & Mr. J.D. Costa
Ms. Melissa Kimberly
Ms. Deborah Klein
Mr. & Mrs. Wally Kooiman
Mr. Ian Kutner & Mr. Steven Chastain
Mr. & Mrs. Thomas Todd Lankford
Mr. & Mrs. Robert Lovett III
Mr. & Mrs. John M. Lowry
Mr. & Mrs. Gus Mandrapillas
Mr. & Mrs. Joseph P. Marley
Mr. & Mrs. Stephen F. Martin
Mr. & Mrs. W. Robert McDade
Mr. & Mrs. G. Whitfield McDowell
Mrs. Joseph H. McGee
Ms. Civil McGowan

Mrs. Wynne N. McLean
Ms. Rebecca McPhail
Dr. & Mrs. T. Lawrence Mellichamp
Mr. & Mrs. William S. Miles
Mr. & Mrs. Robert Miller
Ms. Mundise Mortimer
Mr. & Mrs. Edward Moyers
Mr. & Mrs. John Mullen
Mr. & Mrs. Brian Murdoch
Mr. Rolfe Neill
Mr. & Mrs. Lowell Nelson
Mrs. Mary O'Connor
Mrs. Kathryn Philip Oxider
Mrs. Cheryl A. Palmer
Mrs. W. William Palmer, Jr.
Dr. Greg Parker & Mr. Charles R. Dickerson, Jr.
Pasta & Provisions
Mr. & Mrs. Bailey W. Patrick
Mr. & Mrs. John M. Phillips
Mr. & Mrs. Roger Price
Mr. & Mrs. Garth K. Radley
Mr. & Mrs. Samuel B. Rankin
Ms. Gayle Ray-Bush
Cathy and Roy Reynolds
Mr. & Mrs. Dale L. Riley
Mrs. Elizabeth Way Rogers
Mrs. Lynn Rogers
Ms. Marcia Rowse
Ms. Linda Rudisill
Mr. & Mrs. Dalton D. Ruffin, Jr.
Mr. & Mrs. Bob Salvin
Mr. & Mrs. James P. Schepp
Ms. Anne Sheffield
Mr. & Mrs. Raleigh A. Shoemaker
Mr. & Mrs. James C. Showalter, Jr.
Mr. Charles G. Simon
Ms. Lynn Sims
Mrs. Suzanne Sloan
Mr. & Mrs. Roy L. Smart III
Mrs. Margaret B. Somerall
Ms. Dina Sorensen
Mr. & Mrs. John L. Sullivan, Jr.
Mr. & Mrs. Charles Tallardy III
Mr. & Mrs. Ruffin Tanner
Mr. & Mrs. Michael Teden
Mr. & Mrs. R. Christopher Teter
Ms. Tracy Thomas
Mr. Brennen Thompson
Mr. & Mrs. Carlton F. Thornbury
Mr. Brent Toland
Mr. & Mrs. Gary J. Toman
Mr. & Mrs. F. William Vandiver
Mr. & Mrs. H. Charles Vogt
Mr. & Mrs. Brian Walger
Mr. & Mrs. W. W. Walker, Jr.

Ms. Carolyn Watts
Mr. & Mrs. Robert T. White
Mr. & Mrs. John R. Wickham
Mr. Jeffrey Witt
Mr. & Mrs. Evan Wood
Dr. & Mrs. Joe H. Woody

Friend \$150 - \$249

Mr. & Mrs. Yeatts Anderson
Ms. Sarah Angotti
Ms. Betty Dale Archer
Ms. Beth Arentsen
Mrs. Kathryn Ashcraft
Mr. & Mrs. Robert T. Atwood
Mr. & Mrs. John M. Barry
Ms. Kristen Beach
Benson Family Foundation
Mrs. Linda Bentley
Mr. & Mrs. Charles Bowman
Dr. Joseph L. Brady, Jr.
Mr. & Mrs. J. Gilbert Browne
Mr. & Mrs. Peter C. Browning
Ms. Mollie Brugh
J'Nell Bryson & Anne Tompkins
Ms. Mallory Burdette
Ms. Ashley Burke
Mr. & Mrs. David Burton
Ms. Elaine Camp
Mr. & Mrs. James D. Carpenter
Mr. & Mrs. Rob Christensen
Mr. & Mrs. Julian J. Clark, Jr.
Ms. Marilyn S. Cole
Mr. & Mrs. William A. Coley
Mr. & Mrs. David Conlan
Ms. Katie Cornwell
Mr. & Mrs. David Craig
Mrs. James B. Craighill
Mr. William Randall Cross
Ms. Pamela Davis & Mr. Steve Carroll
Mrs. Debra Dawson
Mr. & Mrs. Howard N. Dean, Jr.
Mr. & Mrs. Derek Dittner
Mrs. Jane T. Dowd
Mr. & Mrs. Jubal Early
Ms. Ashley Edison
Mr. & Mrs. Thomas C. Ewing, Sr.
Mr. Stephen Field
Mr. George W. Fleming, Jr.
Ms. Stephanie Fontaine
Ms. Alicia Gaul
Mr. & Mrs. Frank L. Gentry
Ms. Martha Gibson
Mr. & Mrs. Hanspeter Giger
Dr. & Mrs. Pressly Gilbert
Ms. Anna Glass
Mr. & Mrs. Kenneth Golder
Anne and Jeff Gray

Ms. Frances E. Griffin
Ms. Caroline Griffith
Ms. Shana Guillebeau
Ms. Carla Hanzal
Mr. & Mrs. E. Hooper Harrison, Jr.
Mr. & Mrs. Michael Haworth
Mr. Peter Henault
Dr. and Mrs. Frank S. Highley
Ms. Liz Hilliard
Mr. & Mrs. Roderick P. Hoover, Jr.
Mr. & Mrs. Jon-David Hoppenfeld
Mr. & Mrs. Bryan Ives
Ms. Joelle Vought Jacobs
Ms. Abigail James
Mr. & Mrs. Thomas L. James
Ms. Kathryn Johnson
Ms. Elizabeth Jones & Mr. Thomas W. Nunnenkamp
Mr. & Mrs. Steve Jones
Ms. Ellen Devereux Joslin
Mr. & Mrs. Alexander G. Kelly
Mr. & Mrs. James J. Kenney
Mrs. Maureen Kinvey
Ms. Beverly Klein
Ms. Faison Knox
Mr. & Mrs. Roy Koppelman
Mr. & Mrs. Kent Lamm
Ms. Catherine Lamont
Mr. & Mrs. Joe Leary
Mr. Jerry Lee & Mrs. Sara Baysinger
Mrs. Myra Lee
Ms. Nita Leslie
Mr. & Mrs. Christopher L. Lingerfelt
Mr. & Mrs. Sean Link
Mr. Ralph E. Lowrance
Mr. & Mrs. Stephen M. Lynch
Ms. Lynn Lytle
Dr. & Mrs. Arnold Ma
Mr. & Mrs. Robert MacCaugherty
Ms. Cindy Martin & Mr. Richard Mitchell
Mr. & Mrs. John Martin
Mrs. Sheryl Mayberry
Mr. & Mrs. Albert L. McAulay, Jr.
Mrs. Margaret McBryde
Ms. Stacy McKenzie
Dr. & Mrs. C. Scott McLanahan
Mr. & Mrs. Hunter Miller
Mr. & Mrs. Joe Moody
Ms. Nikki Moore
Mr. Robert F. Murphy & Mr. Richard Rondenelli
Mr. & Mrs. Matthew Myer
Ms. Elizabeth Medearis Myers
Mr. & Mrs. R. Lee Neale
Mrs. Susan S. Nunn
Ms. Auguste Olson

A LIVING GARDEN LEGACY: The Clarkson Society

Your legacy can live in the gardens of Wing Haven with a planned gift to the Foundation. Join the growing number of friends who have joined The Clarkson Society by deciding to create a living legacy at Wing Haven. A planned gift can be as simple as making a bequest in your will or trust, or naming Wing Haven Foundation as a beneficiary of an IRA, a life insurance policy, investment or certificate of deposit. Please call Susan Evans 704.331.0664 ext. 108 for more information. As with any financial decision, you should consult your attorney, CPA or financial advisor.

Photo © Betty Thomas

ANNUAL CONTRIBUTIONS *continued*

Ms. Carole L. Outwater
 Mr. & Mrs. David Parks
 Ms. Sylvia Parsons
 Ms. Julia Roddey Paul
 Ms. Katherine Paul
 Dr. & Mrs. Walton S. Peery
 Dr. & Mrs. Paul Perlik
 Mr. Barry Pettinato
 Mr. & Mrs. Taylor Piephoff
 Mr. & Mrs. Bryan W. Pittman
 Mr. & Mrs. Preston P. Purdum III
 Mrs. Lucy A. Quintiliano & Mr. Leonard J. Fumi
 Ms. Barrett Sloan Ranson
 Dr. & Mrs. Alfred Rhyne III
 Ms. Cindy Rotermund
 Mr. & Mrs. James Rountree, Jr.
 Ms. Julie Ruterbories
 Mrs. Carl Scharf
 Mrs. Beth Schneider
 Geoffrey R. Schott
 Ms. Beth Seiler
 Mr. & Mrs. Charles F. Shepard
 Mrs. Sarah Shifflet
 Mr. & Mrs. J. Rush Shull III
 Mr. & Mrs. Joshua M. Smith
 Mr. & Mrs. William Smoak
 Ms. Laurel Socha
 Mr. Arthur Spring
 Mrs. Ingrid Steele
 Mrs. Jeanne H. Steele
 Ms. Albertine Stenbit
 Mr. & Mrs. James A. Stenhouse, Jr.
 Ms. Winifred Stieglitz
 Mrs. Jean M. Sullivan
 Mr. Sean E. Sullivan
 Ms. Susan Sullivan
 Ms. LeAnn Swieczkowski
 Mr. & Mrs. William G. Thomas II
 Mr. & Mrs. James W. Thompson
 Ms. Donna G. Thrasher
 Ms. Roma Tison
 Ms. Molly Toll-Reed
 Ms. Jacqueline Veit
 Ms. Rebecca Wallace
 Dr. Bobby Ward & Mr. Roy Dicks
 Dr. & Mrs. William B. Warlick, Jr.
 Mr. & Mrs. Thomas A. Washburn
 Mrs. Betsy Weathersbee
 Ms. Karen Webster
 Mrs. Anna B. Weil
 Mrs. Robin Weisner
 Mr. & Mrs. Clarence E. Williams III
 Ms. Eleanor Williams
 Ms. Nancy L. Williams & Mr. Roger Dahner
 Dr. & Mrs. Jeffery Willis
 Mrs. Alston Osgood Wolf
 Ms. Jaclyn Wright
 Ms. Susan ZumBrunnen

Contributor *60 - \$149

Ms. Millicent Abi-Nader
 Mrs. Alice P. Adkins
 Mr. & Mrs. Jim Adkins
 Ms. Lorraine Aitken
 Ms. Lydia Alexander
 Mrs. Alison Allen
 Ms. Suzanne Alvarez
 Mr. & Mrs. H. Perrin Anderson
 Ms. Lindsey Antonio
 Mrs. Brenda Arey
 Mrs. Elizabeth Arnall
 Ms. Angela Arno
 Mr. & Mrs. Alan Aron
 Mrs. Wendy Asbrey
 Ms. Karen Aschenbrenner
 Mr. & Mrs. John Asinger
 Mr. & Mrs. Eugene P. Avery
 Ms. Sara Badenhop
 Ms. Elizabeth Baker
 Ms. Ann M. Baldwin
 Mr. Christopher Baldwin
 Mrs. Tonya C. Banbury
 Ms. Karen Barnes
 Mr. Jeffrey Barminger
 Mrs. Marianne E. Barrowman
 Mr. & Mrs. Michael Bartlett
 Mrs. Dalon G. Bass

Mr. Jeff Bassett
 Ms. Susu Bear
 Ms. Jessica Beaver
 Ms. Elizabeth Beck
 Ms. Amanda Belcher
 Mr. Gary Bell
 Ms. Elizabeth Benson
 Ms. Lorin Bent
 Ms. Elizabeth Benton
 Ms. Mary Berdick
 Ms. Patricia Bernard
 Ms. Leslie Bernick
 Ms. Ellen Bird
 Mr. & Mrs. Robert M. Bisanar
 Ms. Geraldine F. Blake
 Ms. Linda M. Bollag
 Mr. Chris Bolling
 Ms. Jamie Bonn
 Mr. & Mrs. Ben Boone
 Ms. Jenny Boone
 Mr. Dennis Boothe
 Mr. Wil Bosbyshell
 Ms. Amy Bowen
 Ms. Jill Boyette
 Mrs. Nancy B. Bracy
 Ms. Julie Bradlow
 Mrs. Richard W. Brescoll
 Mr. Charlie Bridgmon and Mrs. Elena Arecco Bridgmon
 Mrs. John P. Brockway
 Mrs. Kathie Broderick
 Ms. Kathleen Bronson
 Ms. Cynthia Brooks
 Ms. Elizabeth V. Broome
 Mr. & Mrs. Charles Brown
 Mr. & Mrs. John W. Brown, Jr.
 Mrs. Mary O. Brown
 Ms. Beth Brown Al-Rawi
 Ms. Mary Elizabeth Bruno
 Ms. Carolyn Buddin
 Ms. Laura Budich
 Ms. Jessica Burke
 Ms. Katie Tinney Burnett
 Ms. Bonnie Burns Covington
 Mr. Shawn Bowers Buxton
 Mr. Henry Byrd
 Mr. & Mrs. Peter Calfee
 Ms. Barbara Callaway
 Ms. Carrie Carlson
 Ms. Megan Camilani
 Ms. Rochelle Carney
 Ms. Ellen Carraro
 Mr. & Mrs. David M. Carroll
 Mrs. Marion B. Carson
 Ms. Lindsay Conner Carter
 Mr. & Mrs. Strawn Cathcart
 Ms. Carole H. Catlett
 Mr. Benjamin Chambers
 Ms. Kim Chaney-Bay
 Ms. Jane Chanon
 Ms. Alexis Chaskey
 Ms. Sasha Chau
 Ms. Heather Cheshire
 Ms. Lauren Child
 Ms. Narcisse Cicak
 Mr. & Mrs. Jack Claiborne
 Mr. Jeff Clark
 Mrs. Nan Robertson Clarke
 Mr. & Mrs. Matt Clement
 Mr. Chuck Clifton
 Ms. Charlise Clyburn
 Mr. & Mrs. Michael A. Cobb
 Mrs. Jane Coghill
 Ms. Amy Cole
 Mrs. Lynn Coleman
 Ms. Kristen Collins
 Mrs. Mary Beth Collins
 Mrs. Carol Collins-Clapp
 Ms. Courtney Connors
 Mr. Raymond Coppola
 Ms. Jane F. Corey
 Ms. Emily Costigan
 Ms. Catherine Cotsakis
 Ms. Suzanne Cowden
 Mrs. Dana Cox
 Mrs. Ann Cramer
 Mr. Bruce Crede
 Ms. Maria Curran & Mr. Don L. Bennett
 Ms. Jacqueline D'Elia

Ms. Ruth Bope Dangel
 Mrs. Lindsay Daniel
 Mr. Lucian Daniels
 Ms. Dottie Davis
 Mrs. Elizabeth Davis
 Ms. Heather Davis & Ross Majewski
 Ms. Jean Davis
 Ms. Margaret Davis
 Ms. Robin Davis
 Mr. & Mrs. H. Thomas Dawkins
 Ms. Veronica Dawson
 Ms. Monica Debbi
 Mr. Eric Deitchman
 Mr. & Mrs. Roberta Del Rossi
 Ms. Cheryl A. DeMaio
 Ms. Susan S. Dempsey
 Dr. Lance Deutsch & Ms. Lenore Jones Deutsch
 Mr. & Mrs. Richard DeVere
 Mrs. Lacy Woods Dick
 Mrs. Brooke S. Dickson
 Mr. Michael Dierkes
 Ms. Brenda DiModugno
 Ms. Patricia Dinias
 Ms. Joanne Dodge
 Mrs. Nancy D. Dorrier
 Mr. & Mrs. Dave Dove
 Mrs. Robert C. Dow
 Ms. Susan M. Dressler
 Ms. Katherine Drummond
 Ms. Lauren Duffey
 Ms. Melissa Duller
 Ms. Carolyn Dunand
 Mr. & Mrs. Wesley D. Duncan
 Mrs. Rosemary Dunn
 Mrs. Dani Durham
 Ms. Abigail Dye
 Mrs. Charles M. East III
 Mrs. Pelham Edmonds
 Ms. Eileen Effinger
 Ms. Juanita M. Efrid
 Dr. Sara O. Elett
 Mr. & Mrs. Dennis Elliott
 Ms. Stephanie Elliott
 Mr. & Mrs. Doug Ellison
 Mr. Andrew Emilio
 Ms. Jennifer Engel
 Ms. Susan Little Evans
 Ms. Danielle Evelyn
 Mr. & Mrs. Tim Everhart
 Ms. Annie Fair
 Mr. & Mrs. Jay Faison
 Ms. Lisa Farley
 Ms. Mary Grace Feeney
 Mrs. Alan Finkel
 Ms. Joanna Fiorelli
 Ms. Melissa Fiorenza
 Ms. Sandra Fisher
 Ms. Dana Fitzgerald
 Ms. Kari Flachman
 Ms. Ashley Flynn
 Mr. & Mrs. Fletcher Flynn
 Ms. Alison Foster & Mr. Phillip Barnes
 Mr. & Mrs. Peter Franco
 Mr. Paul Freeman & Mr. John Hasouris
 Ms. Angela Friedland
 Mr. & Mrs. J. Henry Froelich III
 Ms. Megan Fuller
 Ms. Eleanor Funderburg
 Mrs. Janice Furtney
 Mr. George Gabel
 Ms. Sarah Gaitner
 Mr. & Mrs. George Galleher
 Mr. & Mrs. James Galvin & Smith Galvin
 Ms. Kimberly Garber
 Ms. Deborah Gardner
 Ms. Jeanne Garrison
 Ms. Sheila Gask
 Mrs. Steve Genkins
 Ms. Diane Gerber
 Ms. Maria Gori
 Ms. Ann Gidley
 Ms. Beth Gilbert
 Mr. & Mrs. Thold Gill
 Ms. Sandra Giller
 Mrs. Mary May Gillespie
 Ms. Gwen Glaeser
 Ms. Lindsay Glasby
 Ms. Frances Glasgow

Ms. Trish Glemba
 Ms. Anna Glodowski & Mr. Chad Smith
 Ms. Jane Glodowski
 Mrs. Harry D. Goff
 Ms. Eimear Goggin
 Mrs. Jessica R. Goglin
 Dr. Jessica Gonzalez
 Mr. & Mrs. David J. Goode
 Mrs. Jill Goodrich
 Ms. Lindsay Gould
 Ms. Mary Gradolph
 Ms. Sara Graham
 Mr. & Mrs. Robert Gray
 Mr. & Mrs. Charles T. Greer
 Ms. Savannah Greer
 Mr. & Mrs. David Gribble
 Ms. Elizabeth Griffith
 Ms. Ruth Ann Grissom
 Mr. Joe Guillot
 Ms. Reina Guzman
 Mr. & Mrs. Kevin Hale
 Ms. Elizabeth Hales
 Ms. Katherine Hall
 Ms. Linda L. Hall
 Ms. Linda Haller
 Mrs. Laura V. Hamelau
 Mr. & Mrs. John P. Hanna
 Mr. & Mrs. Bill Hannon
 Ms. Martha Harrington
 Ms. Virginia R. Hartley
 Ms. Audrey Harvey
 Ms. Fayette Harvin
 Mrs. Lee Barnhardt Hatling
 Ms. Elizabeth Hawfield
 Ms. Billie Hawkins
 Ms. Sarah Hawkins
 Ms. Alice Hayes
 Mr. & Mrs. Stephen Healy
 Mr. & Mrs. Tom Hearn
 Ms. Peggje Heeney
 Ms. Gracie Hemphill
 Mrs. Sara Henderson
 Mr. Edward Hennessey
 Ms. Sharon Herman
 Ms. Katie Hermann
 Mrs. Carl H. Hewett
 Ms. Jenny Hiatt
 Ms. Carol D. Hicks
 Ms. Christina High
 Ms. Molly Hill
 Mr. & Mrs. Zach Hill
 Mrs. Richard A. Hills, Jr.
 Ms. Jen Hilzinger
 Ms. Bonnie Hines
 Mr. Scott Hines
 Ms. Tara Hinote
 Ms. Laura Hobbs
 Dr. & Mrs. Randy A. Hock
 Ms. Sharon Hockfield
 Ms. Dorothy D. Hodges
 Mr. & Mrs. Fletcher Flynn
 Mr. & Mrs. James N. Holloway III
 Ms. Becky Holmes
 Mr. Jeff Holmes
 Mr. & Mrs. James Hoveland
 Mr. David Howell
 Mr. & Mrs. N. Douglas Hoy, Jr.
 Ms. Penney Hubbard
 Ms. Robin Huffman
 Ms. Dawn Huntley
 Ms. Lisa Hunting
 Mr. & Mrs. Gregory Irwin
 Ms. Elizabeth Jack
 Ms. Laura F. Jackson
 Ms. Jane Claire Jacobi
 Ms. Laura Jenkins
 Ms. Sarah Jenkins
 Ms. Libby Jernigan & Ms. Pete Mangum
 Ms. Abby Johnson
 Ms. Bethany Johnson
 Ms. Caryn Johnson
 Mrs. Susan H. Johnson
 Mrs. Cynthia Moore Jones
 Ms. Jessica Jones
 Mrs. Ruth Mary Jones
 Mr. & Mrs. Richard M. Joyner
 Ms. Lisa Kannenberg
 Mr. & Mrs. Howard Kaplan

Mrs. Bridges Keiger
 Mrs. Dixie Kelly
 Ms. Karin Kemp
 Ms. Katie Kenas
 Mr. & Mrs. Bruce Kenyon
 Mr. David Kern & Ms. Melissa McGuire
 Ms. Anne Kerr
 Ms. Joan Kilian
 Ms. Anika Kim
 Mr. Jeff King
 Mrs. James Kiser
 Mr. & Mrs. Jamie Kiser
 Ms. Kana Knollmeyer
 Ms. Ellen Knott
 Ms. Kristin Kracke
 Mr. & Mrs. Ira Krauss
 Mrs. Sara Kulbersh
 Mr. & Mrs. Jason Kum
 Ms. Dalya Kutchei
 Ms. Amanda Lackey
 Mrs. Sharon M. Lacy
 Ms. Susie Lake & Mr. Jim Russell
 Ms. Dawn Lamb
 Ms. Pamela Lampel
 Mr. & Mrs. Eric Langerman
 Mr. & Mrs. Richard Langford
 Ms. Stacy Lapinel
 Ms. Nancy Lasater
 Mr. & Mrs. Anthony Terrell Lathrop
 Ms. Marilyn Laveglia
 Mrs. Rozanna Lawing
 Ms. Pamela Lawler
 Mr. Thomas Lawrence
 Mr. & Mrs. J. Mark Leggett
 Ms. Audrey Lehner
 Ms. Krista Lengacher
 Ms. Heather Lenox
 Mr. & Mrs. Hal Levinson
 Ms. Cait Lewis
 Ms. Rhonda Lewis
 Ms. Heather Liebler
 Ms. Nancy Lindsey
 Ms. Emilia Linsangan
 Mr. & Mrs. Carter Loetz
 Ms. Karen Longo
 Ms. Nancy Lopez-Ibanez & Ms. Michele Allison
 Ms. Carolyn Loudenslager
 Mr. & Mrs. Josiah C.T. Lucas
 Ms. Isabelle MacGregor
 Ms. Jackie MacVean
 Mrs. Ben C. Maffitt III
 Mr. & Mrs. John C. Mahoney III
 Ms. Janet R. Malkemes
 Mrs. Allison Malter
 Ms. Ellen Mark
 Mr. & Mrs. M. L. Marley, Jr.
 Mr. & Mrs. James Marshall
 Mrs. Thana Marshall, Sr.
 Mrs. Sloane Mayberry
 Ms. Susan Maynard
 Ms. Brandon Little Mayo
 Ms. Brooke Mazhari
 Mrs. Paul H. McArthur III
 Ms. Christine McCluskey
 Ms. Robin McCoy
 Mr. & Mrs. Daniel McDonough
 Mrs. Jennifer McGivney
 Ms. Ellen McGuire
 Ms. Meg McInnis
 Mrs. Diana McIntire
 Mrs. Sarah McKenney
 Mr. & Mrs. J. Malcolm McLean
 Ms. Shannon McNamara
 Mr. & Mrs. Jacob M. Meckler
 Mr. & Mrs. Ernest L. Meland
 Mr. & Mrs. James Michael Merriman
 Mr. Richard Metzler
 Mr. & Mrs. Jeff Michael
 Mrs. Elizabeth Miescher-Clemens
 Mr. & Mrs. Brent Milgrom, Jr.
 Ms. Jada Miller
 Mr. R. Bruce Miller
 Ms. Elke Mogendorf
 Mr. Steve Montgomery
 Montibello Garden Club
 Ms. Susan Moore
 Ms. Robynn Moraites
 Ms. Lisa Morgan

Mrs. Tyleta Morgan
 Ms. Stephanie Moss
 Mr. George Mundorf
 Ms. Maxine D. Murdock
 Mrs. Charles Murray
 Ms. Jeanette S. Murray
 Ms. Sandra R. Myers
 Ms. Elizabeth Nardi
 Mr. & Mrs. James Nash
 Mr. & Mrs. Philip Neely
 Ms. Jill Nelson
 Ms. Linda Nelson
 Mr. & Mrs. Mark Nemitz
 Mr. & Mrs. Dean G. Nestvogel
 Mr. James Newheiser
 Ms. Roxanne Newton
 Ms. Nancy Nicholson
 Mr. & Mrs. Colin Niebuhr
 Ms. Debbie O'Brien
 Mr. Jonathan O'Connor
 Mr. & Mrs. Brian O'Malley
 Ms. Kimberly O'Shea
 Ms. Karen Olive
 Mr. & Mrs. Josh Ollek
 Ms. Jillian Olsen
 Ms. Margery Orell
 Ms. Wendy Orellana
 Mr. & Mrs. Bob Otten
 Mr. Raymond E. Owens Jr. & Ms. Sally Higgins
 Mr. & Mrs. Dave Palmere
 Mr. & Mrs. Joseph Pappalardo
 Ms. Paula Pappas
 Ms. Jill Parker
 Ms. Hope Parrott
 Mr. Clayton S. Parsons III
 Mrs. Anne W. Pate
 Mr. Lynn Pawlowski
 Ms. Jennifer Pearsall
 Ms. Beverly S. Pearson
 Ms. Cheryl Pelayin
 Ms. Sakana Pennink
 Mrs. Susan Poel
 Mr. & Mrs. Perry Poole
 Ms. Ann Powell
 Mrs. Danyne G. Powell
 Ms. Alicia Prescott
 Ms. Faith Preslar
 Ms. Candace Price
 Ms. Katalin Price
 Mr. Alan Primack & Dr. Alison Garten
 Ms. Suzanne Pully
 Mr. Dennis Ragan
 Mr. Hatsu Ramadhan
 Mrs. Anne Rankowitz
 Ms. Joan Rasmussen
 Ms. Allison Rauch
 Mr. & Mrs. C. Richard Rayburn, Jr.
 Mr. & Mrs. R. Craighill Redwine
 Mrs. William Shannon Reid
 Ms. John Reilly
 Dr. Lynn Reiser
 Ms. Sylvie Repecky
 Mr. David Rhinehalt
 Ms. Christine Rhyne
 Ms. Margaret Rice
 Ms. Stephanie Rickenbaker
 Mr. & Mrs. Robert Ricketts
 Ms. Paula Rieck
 Dr. Patricia Roddey
 Ms. Sandra E. Roether
 Ms. Linda Rogers
 Ms. Bettye Roller
 Mr. & Mrs. Tom Rorro
 Mrs. Virginia Rosen
 Mrs. Patricia M. Rourke
 Mr. & Mrs. George Rudisill
 Mr. Karl Rudisser
 Ms. Sherry Rae Rumbough
 Ms. Genny Runge
 Ms. Melissa Rupnarine
 Mrs. Kathy Rutledge
 Mr. John Ryan & Mr. Steve Mohny
 Mr. & Mrs. Ronan Ryan
 Ms. Lindsay Salamon
 Mrs. Marsden W. Sale
 Mr. & Mrs. J. Alexander Salsbury
 Mrs. Gail C. Salmon
 Ms. Margaret Sanford

ANNUAL CONTRIBUTIONS *continued*

Ms. Courtney Santos
 Mr. Charles Saunders
 Ms. Laura Saune
 Ms. Leary Scarborough
 Ms. Allison Schilz
 Mr. Earl Schmitke
 Ms. Dawn Schmitz
 Mr. Howard Schneider & Ms. Elizabeth Copple
 Ms. Holly Schoolmeester
 Mrs. Yvonne Schulze
 Mr. & Mrs. Ronald E. Schumer
 Mr. Ryan Serey
 Ms. Jacy Shaffer
 Mr. David Shaver
 Ms. Maddie Shavers
 Mr. & Mrs. Jonathan Shaw
 Mr. & Mrs. Mark Shea
 Mr. & Mrs. Waid Shelton
 Mrs. Kathryn Sherard

Ms. Hobby Sherman
 Ms. Janna Sherman
 Ms. Christine Shoemaker
 Mr. & Mrs. Theodore Shonts, Jr.
 Mr. & Mrs. John Short
 Ms. Mary Shuster
 Ms. Shanna Simpson
 Mr. Dan Singletary
 Mr. & Mrs. Ed Singletary
 Ms. Margaret Sirk
 Ms. Kaitlin Skiver
 Mrs. Julie Smigel
 Mr. & Mrs. Blair Smith
 Mr. Deryl Smoak
 Ms. Ashley Snider
 Mr. & Mrs. David S. Snow
 Ms. Maria Neal Soleimani
 Mrs. C. D. Spangler, Jr.
 Mrs. Catherine Spencer
 Ms. Nimisha Srivastava

Ms. Beth St. Martin
 Mr. & Mrs. Allen Stafford
 Mr. & Mrs. Christopher Stallman
 Ms. Kate Stanley
 Ms. Rita Stanley
 Ms. Lindsay Starr
 Ms. Larissa Bixler Stein
 Ms. Jessica Stewart
 Mr. Tucker Stine
 Ms. Joan Stone
 Ms. Rae Ann Streyle
 Ms. Alexandra Stuart
 Ms. Lori Suess
 Mr. Joe Swift
 Mrs. Nancy Swonger
 Mr. Ryan Tabis
 Ms. Ann Taggart
 Ms. Barbara Taylor
 Mr. & Mrs. David Taylor
 Mr. & Mrs. Barry A. Teague

Ms. Arlene Tencaza
 Ms. Margaret Thies
 Ms. Elizabeth A. Thomas
 Ms. Kate Throneburg
 Mrs. William O. Tome, Jr.
 Ms. Milissa Tonkin
 Ms. Kendall Tosco
 Mr. Keith Towery
 Mr. & Mrs. John Turnbull
 Mrs. Teresa Turner Hall
 Mr. & Mrs. John Tyson
 Ms. Mary Ullman
 Mrs. Anabela S. Van Rynbach
 Ms. Cynthia Vanderlip
 Ms. Andrea Vann
 Ms. Elizabeth Velinski
 Ms. Barbara Veliskakis
 Ms. Heather Vengurlekar
 Ms. Valerie Vickers
 Mr. & Mrs. Huy Vu

Mr. & Mrs. David K. Wagner
 Mr. & Mrs. John Wahr
 Ms. Lauren Walker
 Ms. Sharon Walker
 Ms. Lesley Wallace-Berman
 Mrs. Edward Jones Wannamaker, Jr.
 Ms. Abbey Wash
 Mr. & Mrs. William Webb
 Ms. Ellen Webster
 Ms. Sherrie Webster
 Ms. Erin Weeks
 Ms. Janice Weigl
 Mr. Daniel Weil
 Ms. Nancy R. Whelchel
 Ms. Lindsey White Nixon
 Ms. Katherine Wiesehan
 Mr. & Mrs. Ronald Dale Williams
 Mr. & Mrs. Tom Williams
 Mrs. Frances Williamson
 Ms. Kristin Williamson

Ms. Rebekah Wilson
 Mr. & Mrs. Robert Wilson
 Mr. & Mrs. Josh Winkle
 Ms. Danae Woodward
 Ms. Mary Beth Wortham
 Mrs. Marcia Wright
 Ms. Barbara Wrobel
 Mrs. Elizabeth B. Yates
 Ms. Allison York
 Ms. Andrea York
 Ms. Karen Zaharia
 Ms. Karen Zapata
 Ms. Helen Zientek
 Ms. Bailey Zimmel
 Ms. Emily Zullo



Photo © Betty Thomas



Photo © Betty Thomas

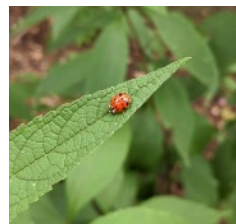


Photo © Betty Thomas



Photo © Betty Thomas

OTHER GIFTS

Gift Membership Donors

Mr. & Mrs. Hayes Ashcraft
Mr. & Mrs. W. Doak Barnhardt
Mr. & Mrs. Thomas M. Belk Jr.
Ms. Sally Brown
Ms. Keirsten Chotkowski
Ms. Joy Clary
Mrs. Ann F. Copeland

Ms. Mitzi Czapla
Ms. Christina Drummond
Ms. Nancy Dwyer
Ms. Daphne Fowler
Mr. & Mrs. Bill Hannon
Ms. Audrey Harvey
Ms. Corinne Hassey

Ms. Debbie Hayden
Ms. Mary Hughes
Mr. Edward Hull
Ms. Laura Karnes
Mr. & Mrs. Lou Lesesne
Mrs. Sloane Mayberry
Mr. & Mrs. Alexander McAlister

Ms. Kathryn O'Neill
Ms. Katherine Paul
Ms. Jennifer Pearsall
Ms. English Rand
Mr. Michael Scherzer
Ms. Shannon Seal
Ms. Sandra Smith

Ms. Lisa Sordi
Mrs. Janet Sullivan
Ms. Judy Swords
Ms. Jennifer Watson
Ms. Karen Webster
Ms. Becca Zeidman

General and Designated Gifts

Mr. & Mrs. James L. Andrews Jr.
Mr. & Mrs. Stanford H. Allison
Ms. Alyson Bailey
Mr. & Mrs. D. Bradford Barrett
Ms. Ellen Bird
Mrs. Rachel Bozin
Mr. & Mrs. J. Frank Bragg Jr.
Ms. Lenora Bruckdorfer
Mr. Henry Byrd
Mr. & Mrs. Thomas Campbell
Charlotte Women's Club
Mr. & Mrs. Douglas Eugene Combs

Mr. Lucian Daniels
Davidson Garden Club
Ms. Lisa Farley
Mr. & Mrs. Kenneth Golder
Mr. & Mrs. James J. Hagan
Hamilton-Stuart
Dr. & Mrs. Edwin R. Harris
Mr. & Mrs. Robert O. Harris
Mr. & Mrs. Adam Hawthorne
Mr. & Mrs. John Herring
Mr. & Mrs. James Hoveland
Ms. Madhu Katta

Mr. & Mrs. Matthew J. Kosmicki
Ms. Caroline Kraich
Ms. Gayle Levesque
Mr. & Mrs. Luka Lojk
Mr. & Mrs. Robert Lovett
Mr. & Mrs. John M. Lowry
Ms. Nikki Moore
Mr. & Mrs. Charles Morris
Ms. Mundise Mortimer
Mr. & Mrs. William Newcomb
Mr. & Mrs. David Parks
Ms. Katherine Paul

Mr. & Mrs. Bryan W. Pittman
Mr. Robert P. Roche
Mrs. Virginia Rosen
Ms. Sheila J. Saints
Ms. Alexandra Santos
Mr. & Mrs. David Schmitz
Mr. Robert Shore & Mr. Brian Caldwell
Mr. & Mrs. Christopher Skardon
Mr. & Mrs. Samuel R. Sloan
Ms. Kathy Spindanger
Mr. & Mrs. Tim Stokes
Mrs. Melissa A. Strahley

Mr. & Mrs. William G. Thomas
Ms. Kelly S. Thomas
Ms. Donna G. Thrasher
Mr. & Mrs. Jimmie L. Wade
Ms. Paige M. Waugh
Ms. Janice Weigl
Mr. & Mrs. Alan Wilson
Dr. & Mrs. Jeffery Willis
Mr. & Mrs. Verner E. Stanley

In Kind Contributions

Ms. Frances P. Alexander
Atlantic Landscape Supplies, Inc.
Mr. & Mrs. D. Bradford Barrett
Mr. & Mrs. Thomas M. Belk Jr.
Mr. Ken Black
Blackhawk Garden Center
Mr. & Mrs. John D. Bond III
Brent & Becky's
Mr. Peter Brouwer, Messick Company
Ms. Sally R. Brown

Mr. Bill Caldwell
Mr. & Mrs. Strawn Cathcart
Kathleen O. Cress
Mr. Steve del Vecchio
Mrs. Robert C. Dow
Mr. James Dronenburg
Dr. Scott S. Geyer
Mr. Peter Guild
Mrs. Cathy Hunter
Mr. Josh Jones

Ms. Grayson Jordan
Mr. Don Kendall
Ms. Juliette Lane
Dr. & Mrs. Gary Levinson
Loftin & Company Printers
Kelly Lojk
Mr. & Mrs. John M. Lowry
Mr. Paul Marley
McPhail & McPhail, PA.
Mrs. Susan S. Nunn

Pasta & Provisions
Ms. Susan Poel
Peaceful Ponds
Pepsi Bottling Ventures
Petit Philippe
R.B. Pharr & Associates, PA.
Mr. William Rudisill
Mr. & Mrs. Christopher Skardon
Mr. & Mrs. Herbert H. Sprott
Mr. & Mrs. Verner Stanley Jr.

Suarez Bakery
Super Sod
Mr. Joe Swift
Ms. Kathy Treadwell
Ms. Mary E. Lindeman Wilson
Witherspoon Rose Culture

Grants, Matching Gifts & Volunteer Grants

Akers Foundation
Ally Financial
Amazon Smile Foundation
Arts & Science Council
Bank of America Charitable Foundation
Berry Global
City of Charlotte/UWCC
Coca-Cola Bottling Co. Consolidated
The Dowd Foundation
Duke Energy
Ecolab

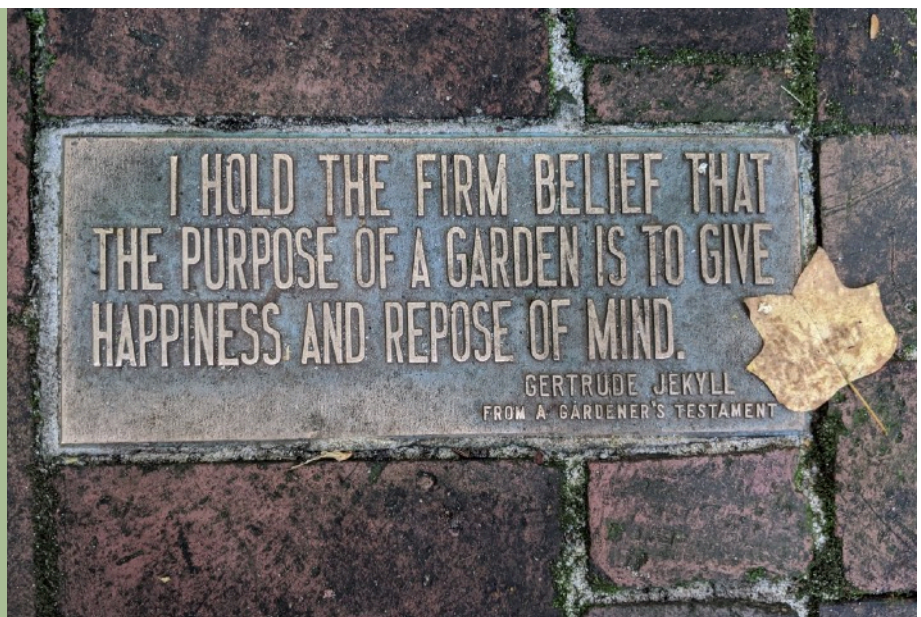
Garden Conservancy
IBM International Foundation
Millennium Advisors, LLC
North Carolina Department of Commerce
PNC Financial Services Group
Share Charlotte
Synchrony Financial
Toro
Trust Foundation
Wells Fargo

STRETCH YOUR IMPACT!

Stretch your impact at Wing Haven! Many companies offer matching gift programs for employees and retirees, and some companies offer volunteer grants giving Wing Haven cash awards when you report your hours spent helping Wing Haven in any way—such as in the gardens, Foundation Office, at events and programs, and more!

"I enjoyed our mindfulness walk and hope we can do this again! It is very special to be in such a beautiful space as the seasons change."

- Maureen Kiv, Mindfulness Walk participant with Charlotte Mindfulness Center



TRIBUTE GIFTS

In Memory Of

Jethro Barry

Mr. Ernest H. Barry

William Ernest Burroughs

Mr. & Mrs. James F. Ayers

Kathleen E. Coddington

Mr. & Mrs. Harvey Frable and the
Coddington Family

Bernadette "Dette" Cummings

Ms. Anje Seufert and yoga friends;
Laura, Nancy & Rebecca

Sylvia Dalton

Mrs. James B. Craighill

Ed and Jeannette Davis

Mr. Daniel M. Davis

Ms. Catherine Thayer

Cecelia Seddinger Dickson

Mr. & Mrs. J. Alexander Salisbury

Joanne Shoemaker Dickson

Mr. & Mrs. Jim Hitch

James "Jim" Elliott

Mr. & Mrs. Robert L. Avinger

Lynn "Skip" Morgan Gantt

Mrs. Hugh B. Campbell Jr.

Anne "Pokey" Van Every Glenn

Mrs. Robert "Pebbles" Nix

Barbara Hiestand

Mrs. Barbara S. Lake

Jane Hunter

Mr. & Mrs. Jack Boyles

Mrs. Hugh B. Campbell Jr.

Mr. & Mrs. Phillip Journey

Mr. & Mrs. Patrick K. Kelly

Mr. & Mrs. W. Robert McDade

Ms. Beth McGinley

Mr. & Mrs. John McNeill

Mr. & Mrs. Thomas Monroe

Ms. Katherine Paul

Mrs. DiaSteiger

Mr. & Mrs. Alan C. Wall

Dr. & Mrs. Joe H. Woody

Thomas M. Little III

Mrs. Lamar Grimes

Ms. Barrett Ranson

Fran Parker

Mr. & Mrs. Jay Anderson and Family

Ms. Janice Broniak

Mr. Rennie Cuthbertson Jr.

Mrs. Stuart W. Elliott

Mr. & Mrs. John McNeill

Ms. Katherine Paul

Ms. Jane Peebles

Mr. & Mrs. Charles Reid

Mr. & Mrs. Richard Richter

Ms. Aimee Romosca

Mrs. Margaret B. Somerall

Mr. & Mrs. Russ Stephenson

Mark Przekop

The Staff at Clean Air Carolina

Epes Robinson

Mille Fleur Garden Club

Samuel Robinson Sloan

Mr. & Mrs. John D. Bond III

Florence Smart

Ms. Robin Thorp McCoy

Jane Balch Smith

Mille Fleur Garden Club

Paul Steiger

Mr. & Mrs. Robert L. Avinger

Ms. Sharon Hockfield

Charles Louis "Dick" Thomas

Mr. & Mrs. William M. Barnhardt

Ken McRae Truslow

Ms. Kelly Vrabel

Bob White

Mrs. Dia Steiger



"Great mix of activities that kept the girls interested and engaged (harvesting sweet potatoes/composting the vines was definitely a highlight). Facilitator was fantastic."

- Girl Scout Badge Day Participant

In Honor Of

Jane Avinger

Ms. Mary Jane Bynum

Kat Belk

Mr. & Mrs. Ruffin Tanner

Susan Cathcart

Ms. Sallie F. Scarborough

Sallie and Derick Close

Mr. & Mrs. Jubal A. Early

Pepper Dowd

Mr. & Mrs. Ralph W. Breeden

Ms. Carol Campbell

Pat Epting

Mr. Nicholas Hager

Beth Handford

Mr. & Mrs. Bo South

Bruce and Low Harry

Ms. Ann Temple

Mildred and Ed Harris

Mrs. Barbara S. Lake

Jill Goodrich

Mr. George Wood

Arlene and Al Krupski

Mr. & Mrs. Deric Krupski

Nancy Lowry

Ms. Anna McMahan

Jane McColl

Mr. & Mrs. Ralph W. Breeden

Charlie Morris

Mr. & Mrs. Ruffin Tanner

Mimi and Bailey Patrick

Mr. & Mrs. Jubal A. Early

Margaret Somerall

Mr. & Mrs. Wally Kooiman

Andrea Sprott

Mrs. Dia Steiger

Dr. and Mrs. Paul Tolmie

Mr. & Mrs. Jubal A. Early

Judy and Sam Woodard

Ms. Juliette Lane

THANK YOU SPONSORS & PARTNERS

Gardeners' Garden Tour

Title

Blackhawk Garden Center

Silver

Brandon Lawn Real Estate
Peaceful Ponds
Petit Philippe
Rountree Plantation
South State Bank

Bronze

Atlantic Landscape Supplies, Inc.
Bartlett Tree Experts
Lat Purser & Associates, Inc.
Super Sod

Partner

Pasta & Provisions

Music in the Garden

Title

Lowry Insurance

Tea Time in the Garden

Title

Brandon Lawn Real Estate

Affiliate

Suarez Bakery

Wing Haven Lecture Series

Title

Blackhawk Garden Center

Bronze

Atlantic Landscape Supplies
C. DeWitt Foard & Co., P.A., CPAs
Living Color Gardens



CLOCKWISE FROM TOP Tour-goers enjoyed all of Wing Haven's gardens during Wander with Wine to kick off our Gardeners' Garden Tour.

Lecture Series participants learned from some of the country's leading experts. Doug Tallamy, who presented about his book Nature's Best Hope. Dr. Larry Mellichamp transitioned to teaching the finer points of pruning through a virtual platform this year. It was a beautiful day for Tea Time in the Garden at Wing Haven Garden & Bird Sanctuary.



STATE OF THE HAVEN 2020-2021

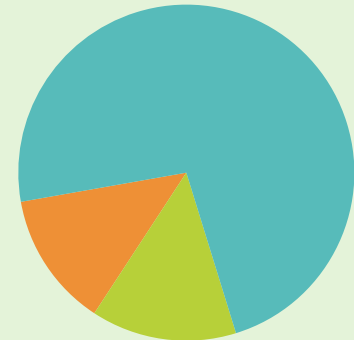
OPERATING REVENUE
\$982,517*

OPERATING EXPENSES
\$830,205*

* based on unaudited financials and includes a CARES Act small business paycheck protection program grant



SOURCE OF FUNDING



USE OF FUNDING

Wing Haven reached
20,661
people in the community
and beyond

1,093
Members and donors

5,374
hours were given by
277
volunteers

3,120
people
enjoyed Wing Haven
through virtual
experiences

2,570
children participated
in children and family
education programs,
including
174
homeschoolers

275
at-risk children
reached,
including
217 preschool
and **58** K-8

273
programs,
workshops, events
and tours offered,
including
6
summer camps

74%

increase in children and family
education participation

53%

increase in adult education
participation

IN OUR GARDENS...

1,396
plants propagated
from our two historic properties
for the
Legacy Plants Collection

184
accessioned genera
planted at
Elizabeth Lawrence House & Garden,
including **40** taxa reinstated,
and **81** plant trials

65
plants installed
in the
SEED Wildlife Garden

CAPTURE THE MOMENT

Capture the moment they say "Yes!" at Wing Haven. Make your proposal memorable at Charlotte's hidden gem. Both tranquil and charmingly romantic, our gardens are the perfect place for a storybook proposal. Create a memory you will both cherish and schedule a surprise proposal photography session! Contact Office Administrator Samantha Wagner at 704.331.0664 x 101 or samantha@winghavengardens.org.

Lindsey Parkhurst and Graves Upchurch Engagement Photo © Maddie Barnhart

DID YOU KNOW?

Our veggie garden is growing! Visitors are welcome to take home produce we have picked, available on the potting table in the Children's Garden. If our vegetables have not yet been harvested, please let them continue to grow. Visit soon and often!

Look for the basket of fresh vegetables in the Children's Garden during our garden open hours. Okra (Abelmoschus esculentus) (pictured below) is beautiful in all stages!





260 Ridgewood Avenue
Charlotte, NC 28209
winghavengardens.org

*Cultivating sanctuary in nature,
environmental stewardship and the
legacy of Southern horticulture*

OPEN HOURS:

Wednesday - Saturday 10 - 5



NON PROFIT
ORGANIZATION
US POSTAGE PAID
CHARLOTTE, NC
PERMIT NO. 2410



Infusion Fund
A Partnership for Arts + Culture



Wing Haven is supported, in part, by the Infusion Fund and its generous donors.

WING HAVEN STAFF

- Barrett Sloan Ranson
Executive Director
- Susan Little Evans
Development Director
- Beth Gilbert
Development Support
- Samantha Wagner
Office Administrator
- Jill Goodrich
Director of Education & Outreach
- Tracey Roode
Education Coordinator
- Stefanie Myer
Marketing Coordinator
- Andrea Funk
Volunteer Coordinator
- Reavis Thornton
*Head Gardener,
Wing Haven Garden & Bird Sanctuary*
- Damou Sako
*Gardener,
Wing Haven Garden & Bird Sanctuary*
- Dawn De La Torre
*Gardener,
Wing Haven Garden & Bird Sanctuary*
- Andrea Sprott
*Garden Curator,
Elizabeth Lawrence House & Garden*
- Amy Poole
Admissions
- Janet Porto
Admissions
- Beverly Pearson
After-Hours Host
- Lorraine Piephoff
Accountant

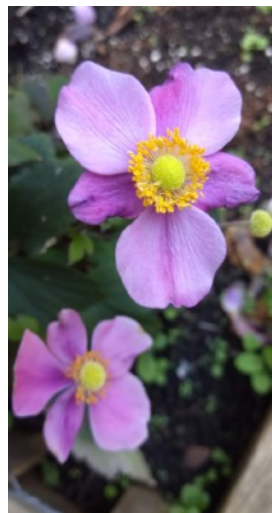
THE BEST PLANT SALE IN CHARLOTTE

OCTOBER 13 (MEMBERS ONLY) OCTOBER 14-16 (OPEN TO THE PUBLIC)

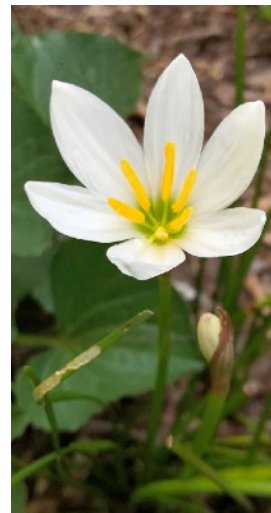
As leaves begin their kaleidoscopic transition, we're reminded that **fall is the perfect season for planting**. Look no further than the Wing Haven Nursery for everything you need for a happy and healthy garden! Shop from a choice selection of all kinds of plants suited to growing conditions in the Middle South, and confer with our volunteers—nearly all gardening experts.

Our Plant Sales are an important source of revenue for our very special properties. Thank you to everyone who shops and/or volunteers with us during our Plant Sales. We appreciate your support!

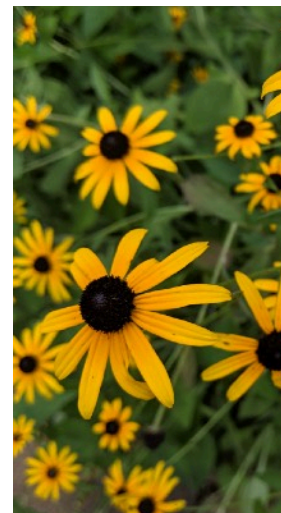
Shop for plants in person by appointment only. **Look for details in your mailbox soon.**



Japanese anemone (*Anemone* sp.)



white rain lily (*Zephyranthes candida*)



black-eyed Susan (*Rudbeckia fulgida*)